

# The ‘Invisible’ Problem

Every day, car owners suffer because of one hidden enemy:

## Contaminated Fuel



It's **invisible**, it enters without **warning**, and it causes **irreversible vehicle damage** and **profit loss**.



Approx ₹1–3 lakh of economic value loss per vehicle

This problem persists becuse.....

Certain fuel stations repeatedly supply bad fuel

Lack of real-time detection

No proof of bad fuel usage history

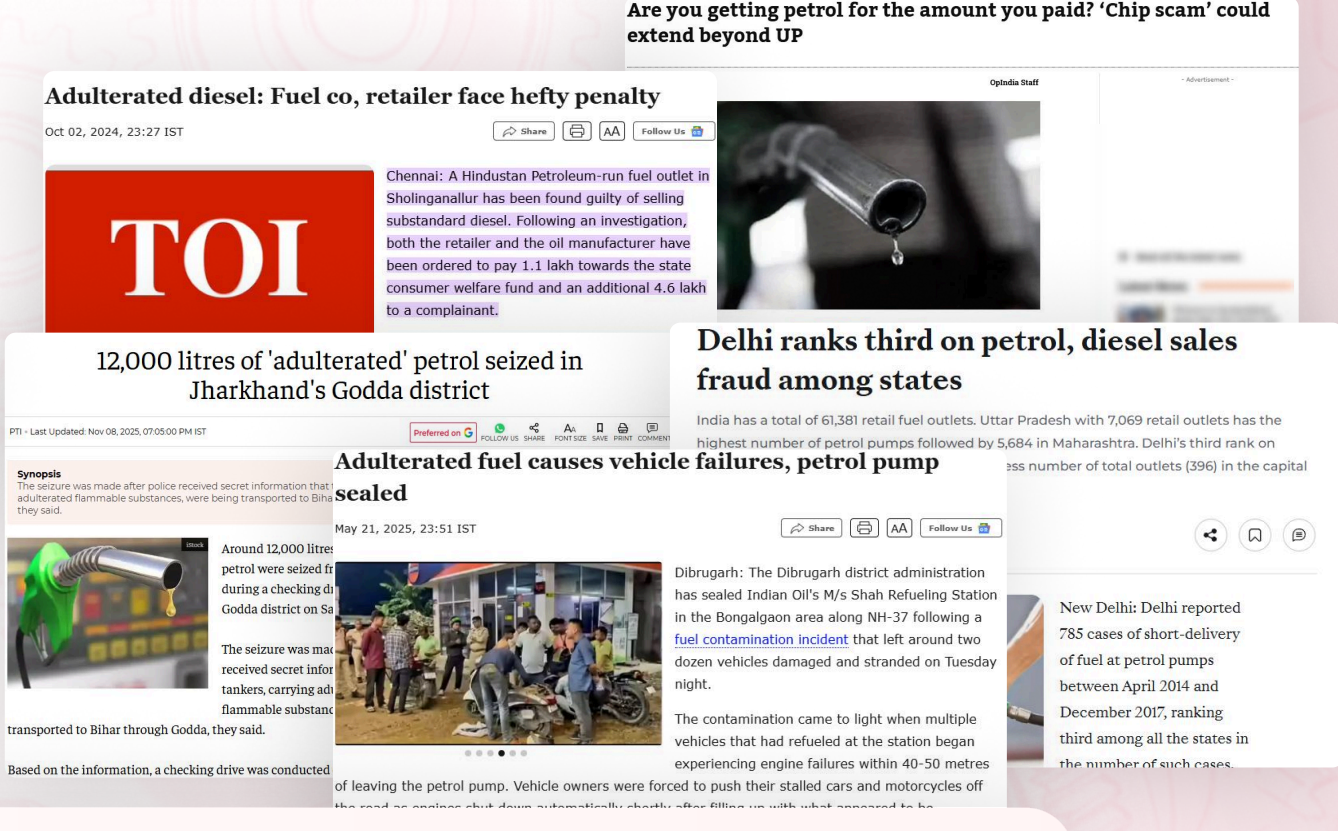
Lack of data to blacklist risky vendors

# Why This Problem Actually Matters Now

Fuel adulteration isn't **new**, but the **consequences** are bigger today

...and still nobody has **visibility** when the fuel enters.

- 01 Modern vehicles are less tolerant of impurities
- 02 Profit loss for fleets caused by downtime
- 03 Loss of resale value due to unknown damage history
- 04 Insurance claim disputes over fuel-related damage
- 05 Accountability in the fuel supply chain is limited



It's the perfect moment for a real-time detection solution

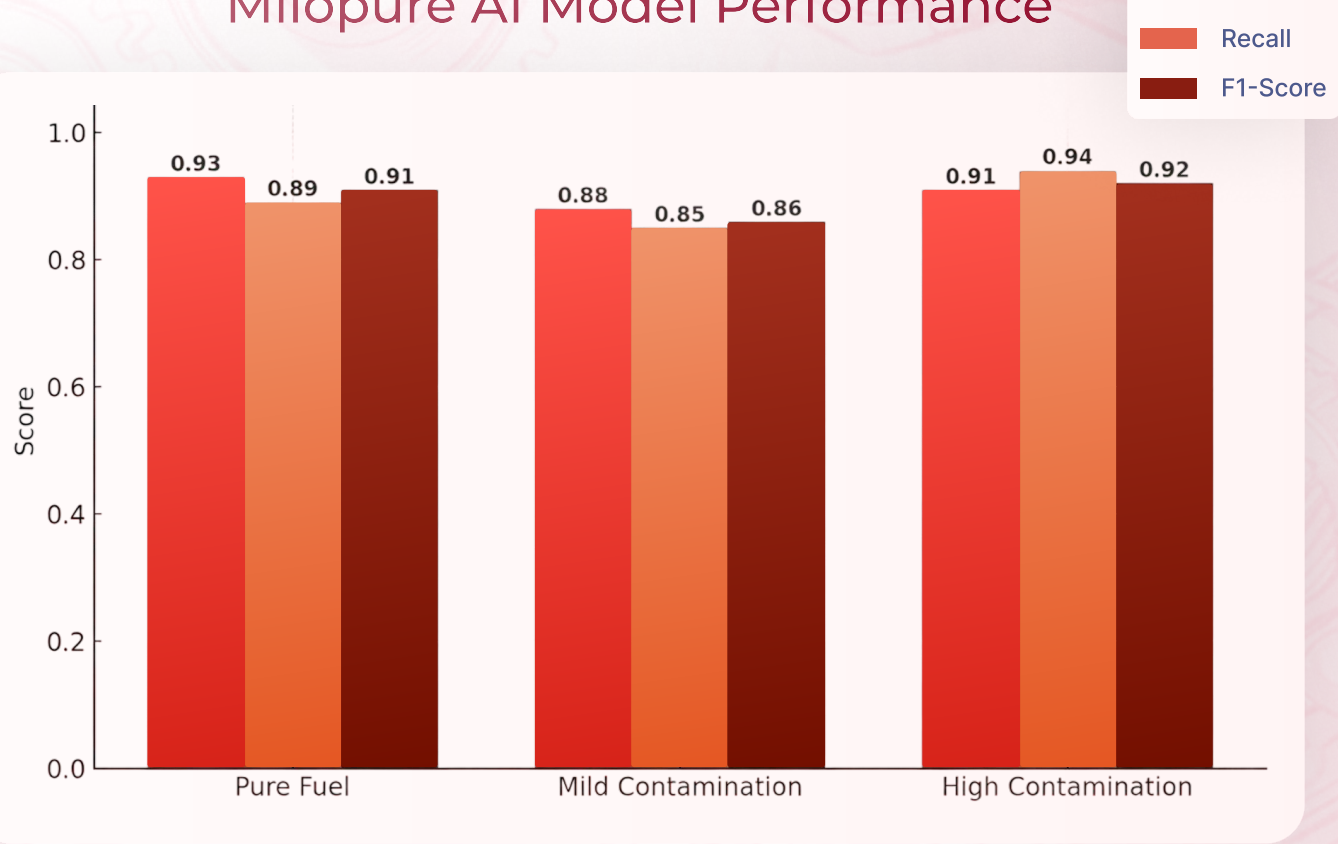
# What Milopure Actually Does

Milopure is an **early-detection system** for your fuel and engine.

It sits at the bridge between fuel inlet and tank, constantly checks the purity of the fuel, and alerts end-users the moment something looks wrong.

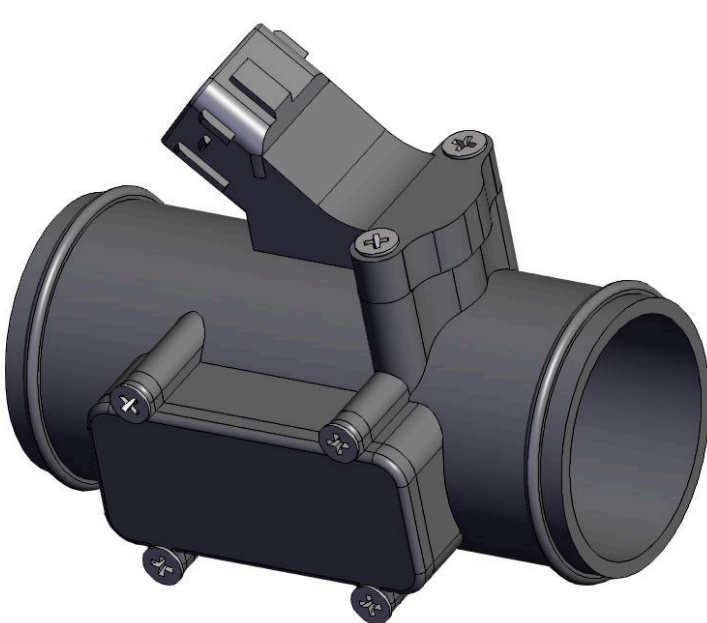
- Detects contamination with **≥98% accuracy**
- Detects fuel theft with **>99.5 accuracy**
- Prevents damage **with real-time updates**
- Creates a database of **trusted fuel vendors**

Milopure AI Model Performance



# What’s Inside the Tech

Milopure is built around an intelligent hardware module:



## MilBridge

The intelligent sensing unit

Patented tech for real-time decisions

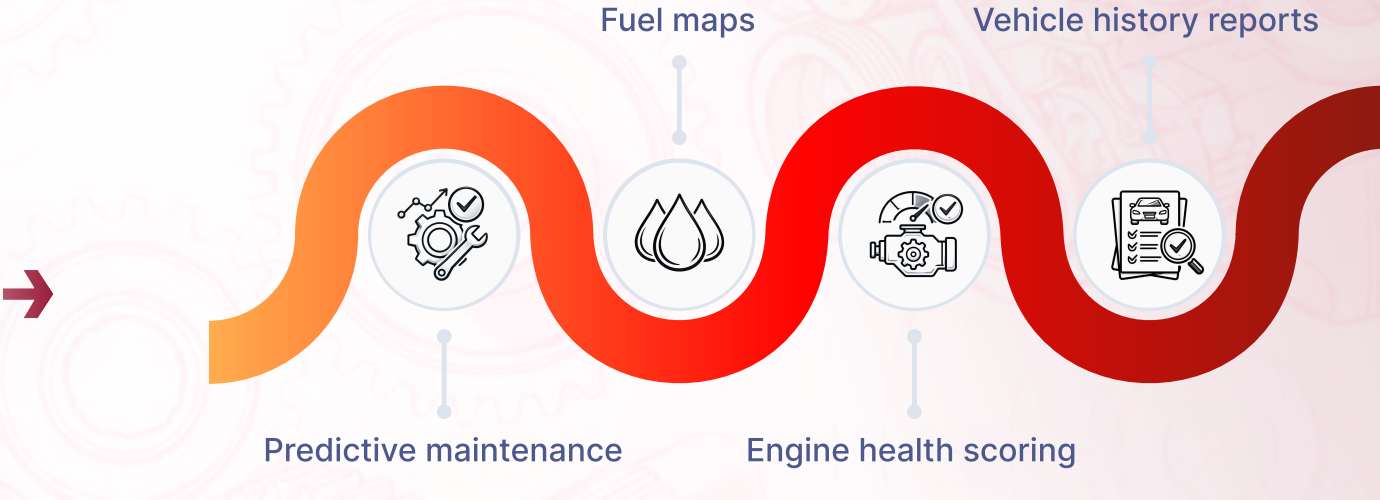
Cloud retraining that keeps improving detection

F1 score ≈ 0.90, which is exceptional for real-world chemical sensing

# The Milopure Platform

What starts as a device becomes a data engine:

- 01 Hardware sensing → **real-time detection**
- 02 AI intelligence → **instant decisions**
- 03 Cloud analytics + API → **fleet/OEM dashboards**

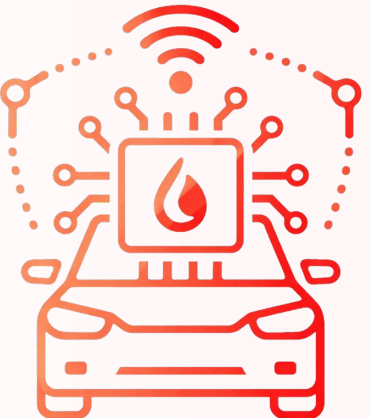


Self-Enhancing Data Flywheel

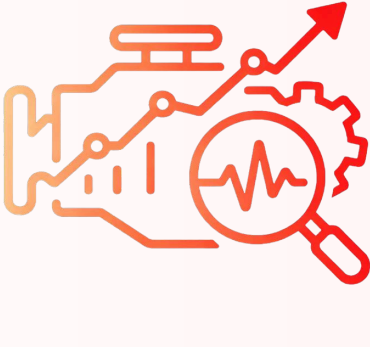


# Milopure’s Long-Term Vision

In 5 years, Milopure becomes:



The default fuel intelligence layer in vehicles



A predictive engine health platform



A trusted verification standard in resale markets



A global fuel-quality intelligence network

“We want every engine to be protected before it fails.”

Milopure is building something the world has needed for decades:  
a pair of eyes inside every fuel tank.

**Now is the time to scale it.**

**Let’s make vehicles smarter, safer, and more valuable together.**

Thanks for your time!

Contact Us:

info@milopure.com

+91 8010033312

milopure.ai